

Neyda Earrings



My contacts:

Facebook page: <https://www.facebook.com/CreazioniCristy89>

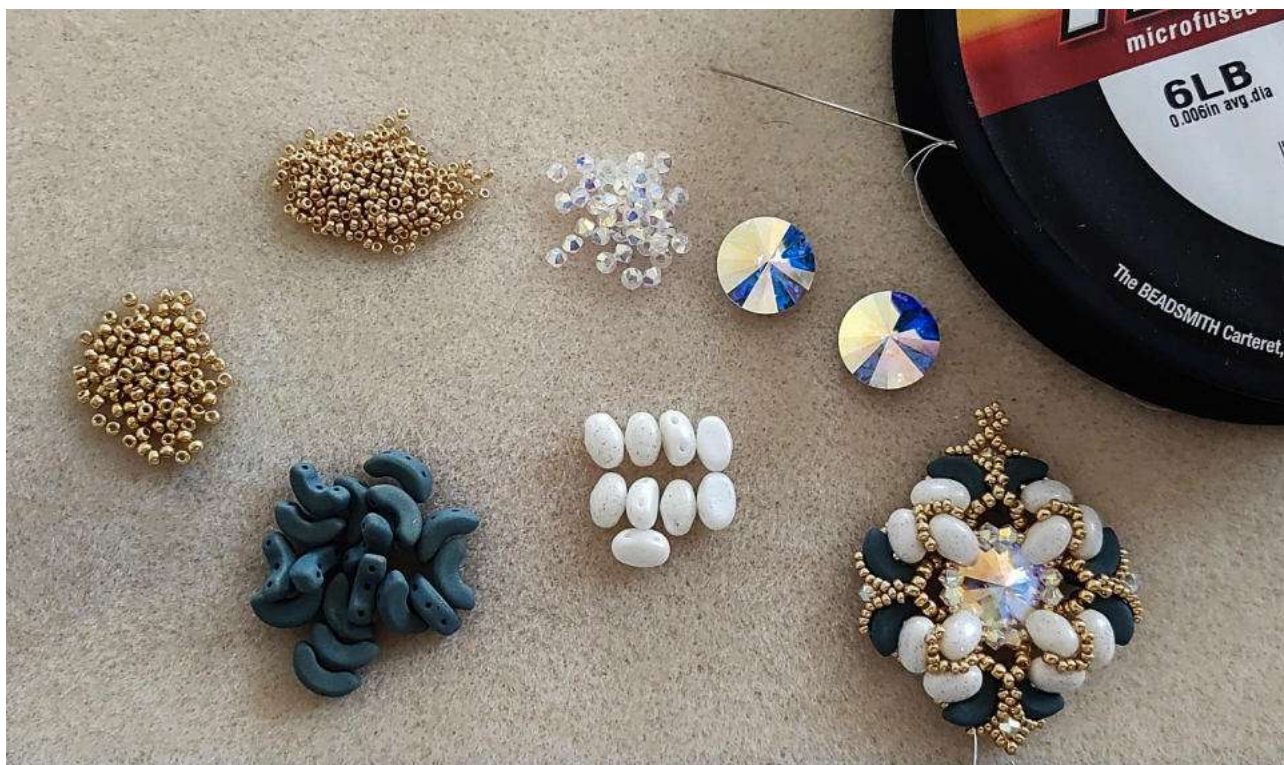
Instagram: https://www.instagram.com/cristy_89z/

E-mail: cristy89eth@gmail.com

YouTube: <https://www.youtube.com/c/CristinaZaicanu>

Shop Etsy: <https://www.etsy.com/it/shop/CreazioniCristy>

This is a project by Cristina Zaicanu, and sale and reproduction in paid and free courses is prohibited!



Rivoli SW 14 mm, Crystal AB, 2 pcs. Arcos Par Puca, Trendy Night Blue Mat, 16 pcs. Samos Par Puca, Consellation White, 24 pcs. Preciosa 3 mm bicone, Crystal Glitter, 24 pcs. Miyuki RR 11, Duracoat Galvanized Gold, 2.5 gr. Miyuki RR 15, Duracoat Galvanized Gold, 1.5 gr.

We start by putting a samos, a RR 15, two 3mm bicones, a RR 15, I continue like this for four times.



Step in processing.



I make the knots near the samos so that when we enter the samos, we pull the knot behind us.



I exit the RR 15 before the Samos, I enter seven RR 11, I skip the Samos, I enter the RR 15, bicono and RR 15.



It continued like this for the whole tour.



I exit the fourth RR 11, enter three RR 11s, go into the fourth RR 11.



Continue like this for the whole round and insert the rivoli inside.



I go through the process two or three times..



I exit from the back of the rivoli from the last RR 11 before the RR15, I enter two RR 11, one arcs and another, facing them and two more RR 11. I enter the first RR 11.



I exit from the first RR 11, I insert two RR 11 (on the back), I exit from the last RR 11.



This is how we have to find ourselves, let's continue like this for the whole tour.



Now we exit the RR before the arcos, I insert five RR 11, I go to the next RR.



I'm going to the RR below.



I'm taking myself out of RR 11.



It continued like this for the whole tour.



I exit the third RR 11 that I just inserted, insert five RR 15s, go into the second hole of the arcos.



I exit from the second hole of the arcos, I insert a RR 15, a samos and a RR 11. I go into the second hole of the samos.



I exit the samos, insert a RR 11, a samos and a RR 15. I go into the second hole of the arcos.



I exit from the second hole of the arcos, insert five RR 15s, go into the third RR 11.



I exit RR 11, enter RR 15, go onto the second RR 15.



This is how it should go out.



I insert three RR 15s and go into the second hole of the arcos.



I put the samos in and it continued like this for the whole ride.



I exit from the second hole of the arcos, insert three RR 15s, go to the penultimate RR 15.



I enter a RR 15, I go to the third RR 11.



I exit the RR 15s, insert three RR 15s, go into the third hole of the arcos.



I leave Arcos, I enter two RR 15s, I go to Samos.



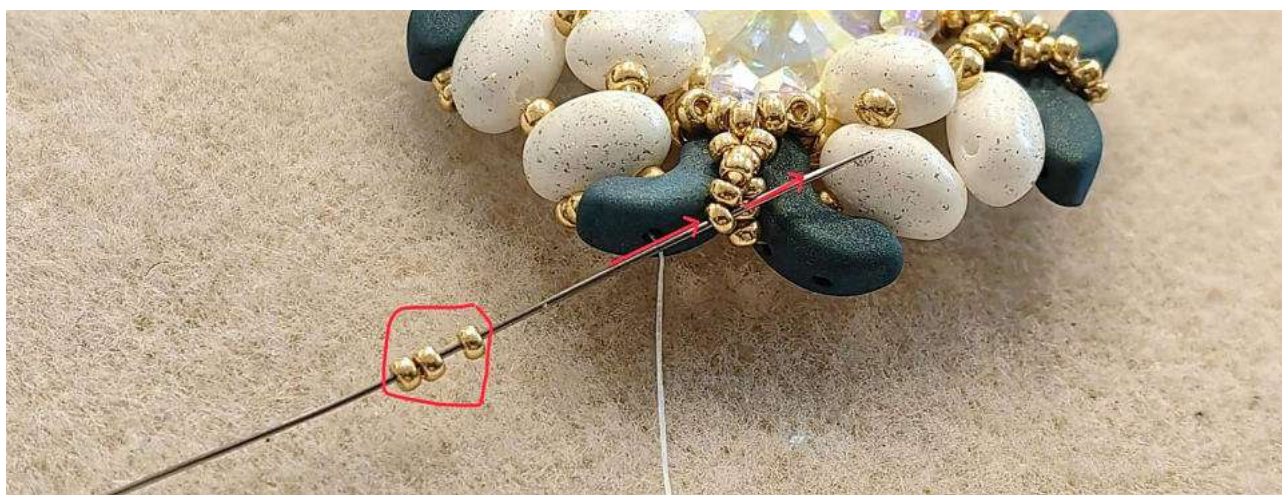
I leave Samos, I enter a RR 11, I go to the other Samos.



I exit the samos, insert two RR 15s, go into the third hole of the arcos.



I exit Arcos, enter three RR 15s, go to the first RR 15.



I exit the RR 15, insert a 3mm bicone, go into the parallel RR 15.



I exit the RR 15, insert three RR 15s, go into the third hole of the arcos.



If the RR 15s get behind the bicone, try to pull them out with the needle. This should be the way we find ourselves.



Once the tour is over, we head off RR 11 between the two Samos islands. I join three RR 15s, go back onto RR 11, Samos, and RR 11.



I exit RR 11, enter three RR 15s, go to RR 11, samos etc..



I exit the third RR 15, enter a RR 15, three RR 11s and a RR 15. I go into the last three RR 15s.



Let's do it like this on both sides. It comes out a little rounded thanks to the samos placed this way..



Let's make a noose for the nun.



The work is done.



The other color variations.

