



Pattern « Perle de Noël 2023 » © par PUCA®



Made by Puca®



September 2023 © Puca
www.perlepuca.canalblog.com
PUCA© All rights reserved

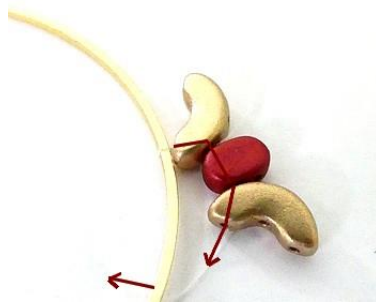


Material :

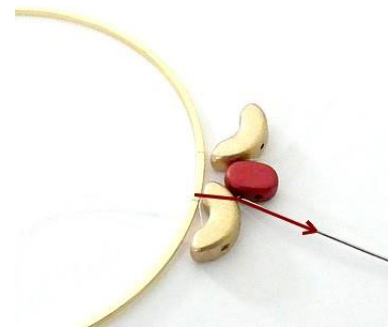
- 42 Arcos® par Puca® - Paris
- 14 Kalos® par Puca® - Paris
- 42 Lipsi® par Puca® - Paris
- 130 Bicones 3 mm (B3)
- 2 Metal Circles 50 mm
- Seed Beads 15/0 (SB15), 11/0 (SB11)
- 1 Pearl with large hole
- 1 Chain or 1 Rhinestone chain 2 mm
- 1 Leather cord of your choice
- Fireline 0.12



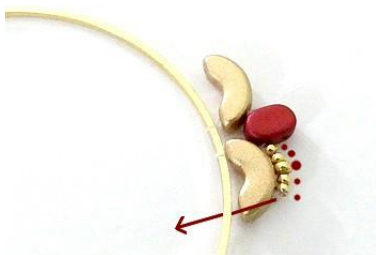
1) Make a knot on the circle



2) Insert 1 Arcos, 1 Lipsi, 1 Arcos and go out under the circle



3) Pass over the circle then into the Arcos



4) Insert 2 SB15, 1 SB11 and 2 SB15 through the Arcos then pass under the circle



5) Ascend to the Arcos. Insert 1 Lipsi and 1 Arcos. Pass under the circle. Repeat steps 3 to 5 all the way around



6) Here is the result 😊



7) Place the work like this 😊



8) Return your work. Insert 1 B3 between the Lipsi and the central SB11 throughout the row 😊



9) Here is the result 😊 Exit through the B3 HERE



10) Insert 5 SB15 through the next B3 (under Lipsi)



11) Insert 1 SB15 through the B3. Alternate steps 10 and 11 for the whole row



12) Here is the result 😊 Exit through the central SB15



13) Insert 1 B3 and 1 SB15 through the SB15 then insert 1 SB15 and 1 B3 through the central SB15



14) Insert 1 Arcos, 1 SB15, 1 B3 and 1 SB15 through the central SB15. Continue alternating steps 13 and 14 throughout the row



15) Here is the result 😊 Exit through the B3 and the SB15 HERE



16) Insert 1 SB11
between SB15.
All the way around 😊



17) Exit through the SB11
of step 16 (red star).
Insert 5 SB15 through the
SB15, B3 and SB15 of the
Arcos



18) Insert 5 SB15 through
the SB11. Repeat steps 17
and 18 throughout the
row



19) Here is the result 😊
Exit through the third
SB15 after the B3



20) Insert 1 Kalos through
the next 4 SB15, then the
B3 and the 4 SB15.
All the way around 😊



21) Here is the result 😊
Exit through the B3



22) Insert 3 SB15 on each
side of the Kalos.
All the way around 😊



23) Here is the result 😊
Exit through the 3 SB15
HERE



24) Insert 3 SB15 under
the Kalos throughout the
row



25) Here is the result 😊
Exit through the fourth
SB15



26) Insert 1 SB15, 1 Lipsi
and 1 SB15 through the
next 4 SB15.
All the way around 😊



27) Here is the result 😊
Exit through the central
SB15 under the Kalos



28) Insert 2 SB15 on each
side of the Lipsi through
the central SB15
All the way around 😊



29) Here is the result 😊
Exit through the Lipsi
HERE



30) Insert 1 B3 between
each Lipsi



31) Insert 1 SB15, 1 SB11
and 1 SB15 through the
B3



32) Here is the result 😊
Exit through the SB11
HERE



33) Insert 1 B3 between
SB11. Tighten well and
end your thread



34) Here is the result 😊
Make a second identical
element 😊



35) Place the elements on
top of each other and
assemble them with your
thread.



36) Glue a chain of your
choice



37) Insert Rhinestone chain
2 mm 😊



38) Insert 1 Leather cord
and 1 pearl with large hole
😊



39) Congratulations and
Merry Christmas 😊

I wish you a happy beading. I offer you this pattern.
Please do not change its design and only use Les Perles par Puca®-Paris
If you publish or share this pattern « THANK YOU » for not forgetting to notify that
it is Puca® who created it.

THANK YOU 😊

