



# Tutorial Christmas Tree Jewel «Bijou de Sapin» par PUCA®

---



Made by Puca



---

November 2021 © Puca  
[www.perlepuca.canalblog.com](http://www.perlepuca.canalblog.com)  
PUCA© All rights reserved



### Material :

- 12 Arcos® par Puca®
- 48 Kalos® par Puca®
- 12 x 4mm round beads (PR4)
- 1 wooden base Jim par Puca®
- 2 x 4mm Strass or 2 x 6mm round beads
- Seed beads 15/0 (R15), 11/0 (R11)
- 1 drop of your choice
- 2 x 5 mm rings
- Chain x20 cm
- Fireline 0.12



1) Pick up 6 Kalos



2) Close and exit through 1st Kalos second hole



3) Between each Kalos, pick up 1 R11



4) You'll now have this, exit through R11



5) Between each R11, pick up 2 R15, 1 R11, 2 R15, exit through following R11



6) You'll now have this. Exit through central R11



7) Pick up 2 R15, 1 Kalos, 2 R15, exit through R11



8) Exit through 2R15, first hole of Kalos and second hole of Kalos like picture



9) Pick up 5 Kalos, exit through 1st Kalos



10) Pass through the next Kalos 1st hole and 2nd hole. You'll now have this



11) Pick up 1 R11, pass through following Kalos



12) Repeat step 11



13) Repeat step 11 for all Kalos, exit through last R11



14) Pass through R11, 2R15, R11, 2R15 like picture and exit through the last R11



15) Repeat from step 5 until you have a total of 5 elements



16) Bead a 6th element by ending like picture



17) Zip the last element with the 1st through the central R11



18) Pick up 2 R15, pass through R11, repeat step 5 twice





19) Pass through following seed beads and exit like picture.



20) Pick up 1 PR4, pass through the 2 following R15 and R11



21) Pick up 1 Arcos, 3 R15, 1 R11, 3 R15, pass through 3rd hole of Arcos, R11 and 2 R15. Repeat steps 20 and 21 for the length of the pattern



22) You'll now have this. Pass through all beads like picture and exit through R11. Repeat step 21



23) You'll now have this, exit through following R15 like picture



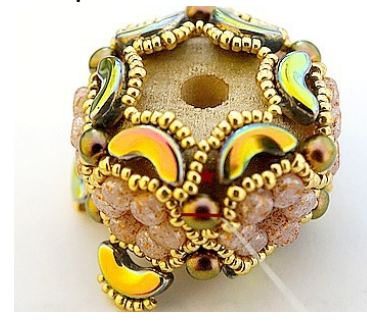
24) Pick up 1 R15 between each group of seed beads above Arcos. Repeat for the length of the pattern



25) Exit like picture, through R15



26) Place the wooden base Jim®



27) Pick up 5 R15, exit through PR4



28) Pick up 5 R15 and go back up through central R15



29) Pass through following seed beads, exit through central R15 and repeat steps 27 to 29 for the length of the pattern



30) You'll now have this. Exit through the 2 R15 after the central R11



31) Pick up 1 Kalos, pass through the following 5 central seed beads, repeat for the length of the pattern



32) You'll now have this, exit through top hole of Kalos like picture



33) Pick up 1 R11 between each Kalos



34) You'll now have this. Exit through R11



35) Pick up 2 R15 between each R11



36) You'll now have this





37) Pass through all beads and turn work over, repeat steps 24 to 36 and close your work



38) Place your chain with a ring



39) On the opposite, place a drop with a ring



40) You can glue a strass or a bead in the center of your jewel



41) Congratulations! You have finished the «Fleur de Noël»



42) Another combination of colors

Happy beading!  
Thank you for respecting my work ©

