

Three Wishes Earrings

By Jill Wiseman
© 2022. All Rights Reserved.

Supply List

- SS39 chatons – 6
- Size 15° seed beads – 2 grams
- Size 11° Delicas – 1.5 grams
- Fireline - 6lb, or beading thread of your choice
- Size 11 or 12 beading needles

I'm a sucker for simple elegance, and these earrings really fit that description! I can see myself making a ton of different combos and lengths, not to mention you could string a longer line of them together to make a bracelet instead! (You would want to use a different connection between the bezels that swivels better if you wanted to make a necklace from them.)

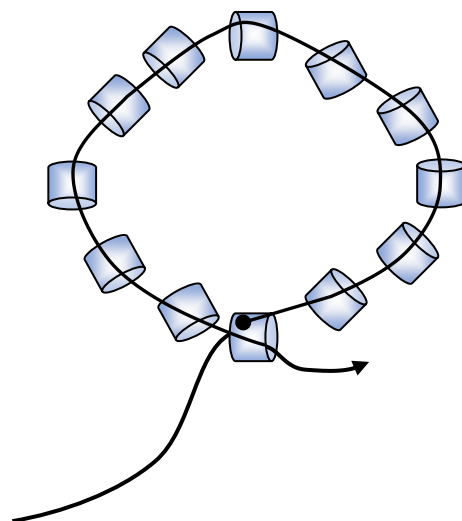
So let's get to bezeling!



Bezel the Chatons

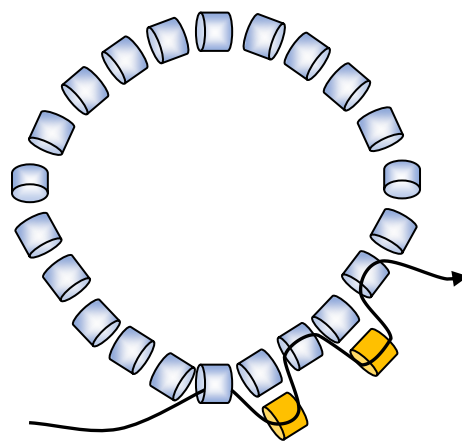
Use about two feet of Fireline and pick up 22 Delicas. Bring them down your thread so you have 4-6" of tail remaining beneath them (just enough to weave back in later.)

Turn them into a circle by passing back through all 22 beads, and then continuing one more bead past your tail. You don't need to use a knot unless you really want to. (Pretend there are 22 in that illustration. 😊)



Peyote stitch around the circle, adding a total of 11 Delicas, and then step up for your next round passing through the first bead added on this round.

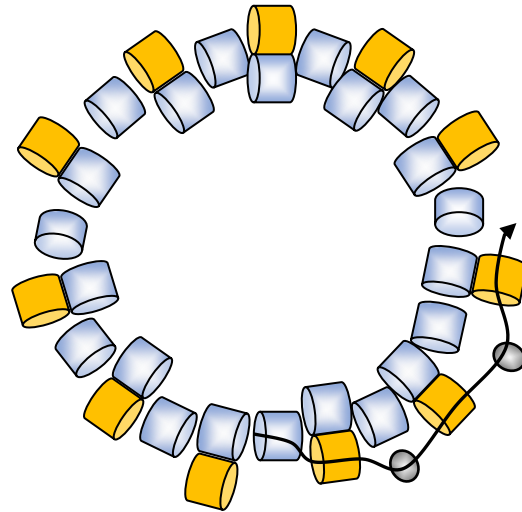
Need basic tubular peyote help? Find the video here:
<https://youtu.be/Vf9EPCHegrg>



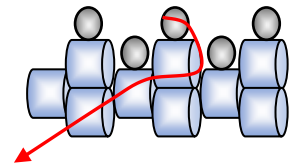
Now you'll add two peyote rows of Size 15 seed beads. This will be the back of the bezel. As you tighten, allow it to form a cup. When you're pulling your thread to tighten it, pull toward the inside of the circle to encourage the cupping.

Don't forget your step up at the end of each row.

To encourage the cupping, it can help to have a dowel on the inside to pull your thread tight against. You can use something as simple as the tip of a pen!

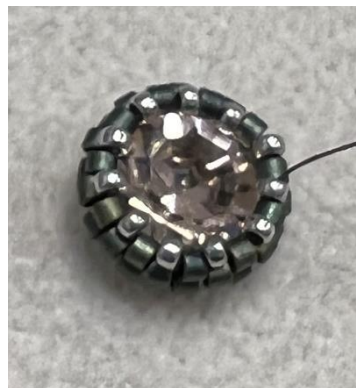


You'll need to work your thread to the opposite side of the bezel now. If you want to continue to work in the same clockwise or counterclockwise direction you were working in before, you'll also need to make a u-turn around as you pass through the beads. I only move one bead at a time to make sure I don't break any beads as I pass through them.



I also usually end off the tail thread at this point.

Place the chaton in the center of the cup you've created. Then add one more round of Size 15 seed beads, tightening your thread inwards as you go. When you have finished that row, if the chaton still feels like it's going to pop out, first try reinforcing that last row of beading, tightening even more as you go. If that doesn't work, you can add an additional row of Size 15s.



Chaton Connections

You'll want to make three bezeled chatons, and they will each have different connections.

The top bezel will need a connection point on the top to the earring finding consisting of five Size 15 seed beads, and a connection point on the bottom to connect to the next bezeled chaton, consisting of three Size 15 seed beads.

The center bezel will need a connection point on both the top and bottom of the bezel. I like to make this bezel first.

The bottom bezel will only need a connection point at the top to attach to the center bezel.

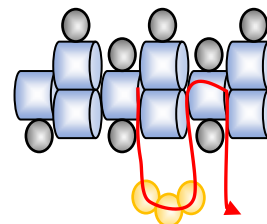
Here's how...

Center Bezel Connections

Because the count on each row is 11 beads when you make the bezel, it is not an even count. That means where you attach the connections will be slightly shifted on each side.

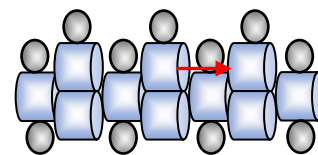
Once you have finished adding the last row of your bezel, you'll work the thread to the center row of Delicas as shown. Since this is the first connection you're creating, it doesn't matter where on the circle you are.

Pick up three Size 15 seed beads, and pass through the next Delica on that same row – you're making a stitch-in-the-ditch. I like to reinforce the connections, so then I turn around (moving one bead at a time so I don't break any!) and pass back through the beads again.



Now I pass through the beads until I get to the opposite side of the connection I just made. You'll need to shift to the back row of Delicas to be able to center it across from the first connection. So it will be slightly farther back on the bezel. But you'll never ever notice.

Repeat adding three Size 15 seed beads, and pass through the next Delica on that same row, then reinforcing the connection. End off your thread.



Showing the back – these Size 15s will sit closer to the Size 15 rows on the back.

Top Bezel Connections

The top bezel will have one connection along the top that connects to your ear wire. It will be just like the connections for the center bezel, but will use five Size 15 seed beads instead of three. If your ear wire loop opens, then you don't need to stitch the beads through the loop at the time you make it. But if your ear wire's attachment loop doesn't open, make sure you add the loop while you're securing the bezel connection.



The bottom attachment will share one bead with the connection from the bezel below it. To do this, create the connection as described previously, but when you go to add the Size 15 seed beads, pick up 1 seed bead, then pass through the center connection seed bead from the other bezel, and then pick up 1 more seed bead. Attach to the bezel as normal, and then reinforce the path.



Bottom Bezel Connection

The bottom bezel will repeat the bezel connection directly above, using a shared center seed bead from the bottom of the center bezel.

Repeat all steps to make a second earring.



If you have any questions while you're working, please feel free to email me at jill@jillwisemandesigns.com.

Visit our website at www.jillwisemandesigns for kits, patterns (many free), beads, and all your beading supplies.

I invite you to explore my YouTube channel at <https://www.youtube.com/user/JillWisemanDesigns>.

Please Note:

By purchasing this pattern, you agree to the following Jill Wiseman Designs conditions:

1. You **may** sell any work made from the pattern if you yourself hand-created the piece (in other words, no mass production). It would be nice if you credited the designer as well.
2. You may not share this pattern. Please understand that this is how we make our living, and by sharing the pattern, you are stealing from Jill Wiseman Designs.
3. You may not photocopy or use any other means to copy this pattern, or any part of this pattern, without written permission from Jill Wiseman Designs.